



# MARQUETTE PROPERTIES, INC.

**Peter Fleming**

Office: 815-941-0207

Cell: 773-882-6286

marquetteprop@sbcglobal.net

## FOR SALE

### Commercial Real Estate – Morris, IL

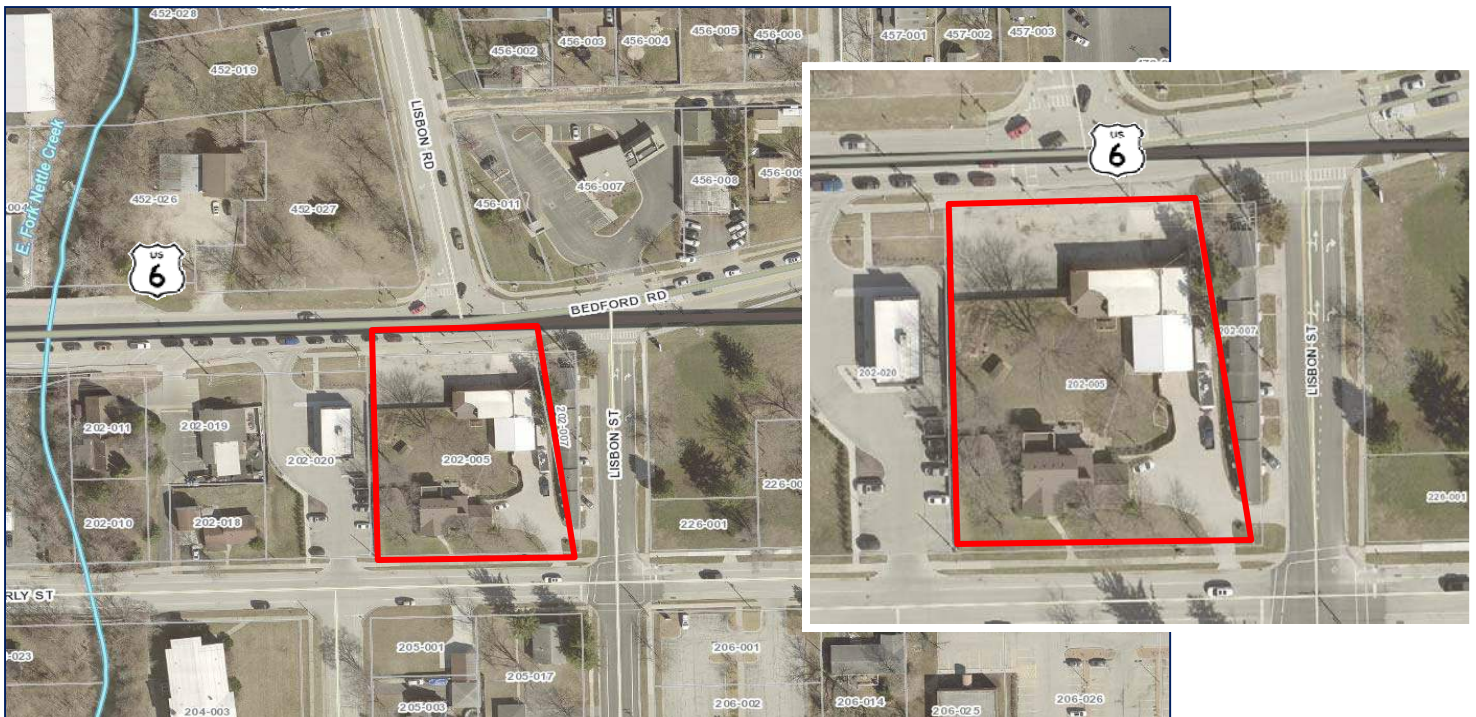
**Size:** 0.86 acres

**Location:** 505 Bedford Rd. & 302 Waverly St. Morris, IL 60450

**Price:** \$975,000

**Taxes:** \$9,724 (2022)

**Comments:** Great Opportunity to own a home and commercial space. Property being sold as one piece. Great location on US Rt 6 with additional frontage on Waverly St. Commercial Bldg was former auto mechanic shop. Call for more details!



7695 Ashley Rd.

Morris, IL 60450

[www.MARQUETTEPROPERTIES.com](http://www.MARQUETTEPROPERTIES.com)