



MARQUETTE PROPERTIES, INC.

Peter Fleming

Office: 815-941-0207

Cell: 773-882-6286

marquetteprop@sbcglobal.net

FOR SALE

Commercial Real Estate – Morris, IL

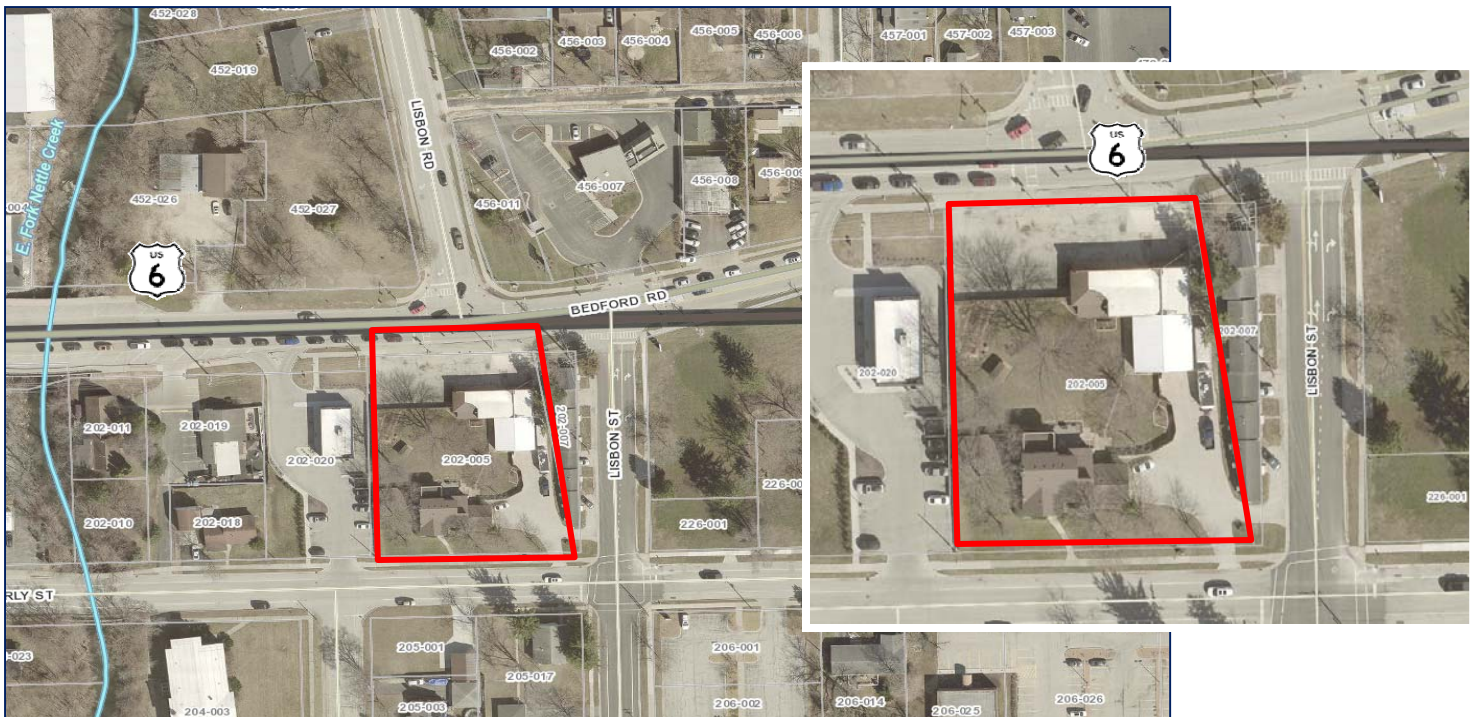
Size: 0.86 acres

Location: 505 Bedford Rd. & 302 Waverly St. Morris, IL 60450

Price: \$975,000

Taxes: \$9,724 (2022)

Comments: Great Opportunity to own a home and commercial space. Property being sold as one piece. Great location on US Rt 6 with additional frontage on Waverly St. Commercial Bldg was former auto mechanic shop. Call for more details!



7695 Ashley Rd.

Morris, IL 60450

www.MARQUETTEPROPERTIES.com