



# MARQUETTE PROPERTIES, INC.

**Peter Fleming**  
Office: 815-941-0207  
Cell: 773-882-6286  
marquetteprop@sbcglobal.net

**Michael Fleming**  
Office: 815-941-0207  
Cell: 815-347-5151  
mjfleming51@gmail.com

## FOR SALE

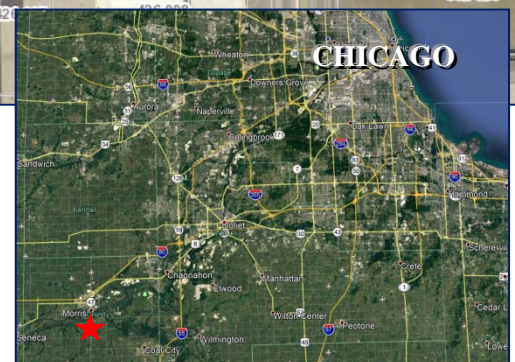
### Vacant Commercial Lot – Morris, IL

**Size:** 1 +/- acre

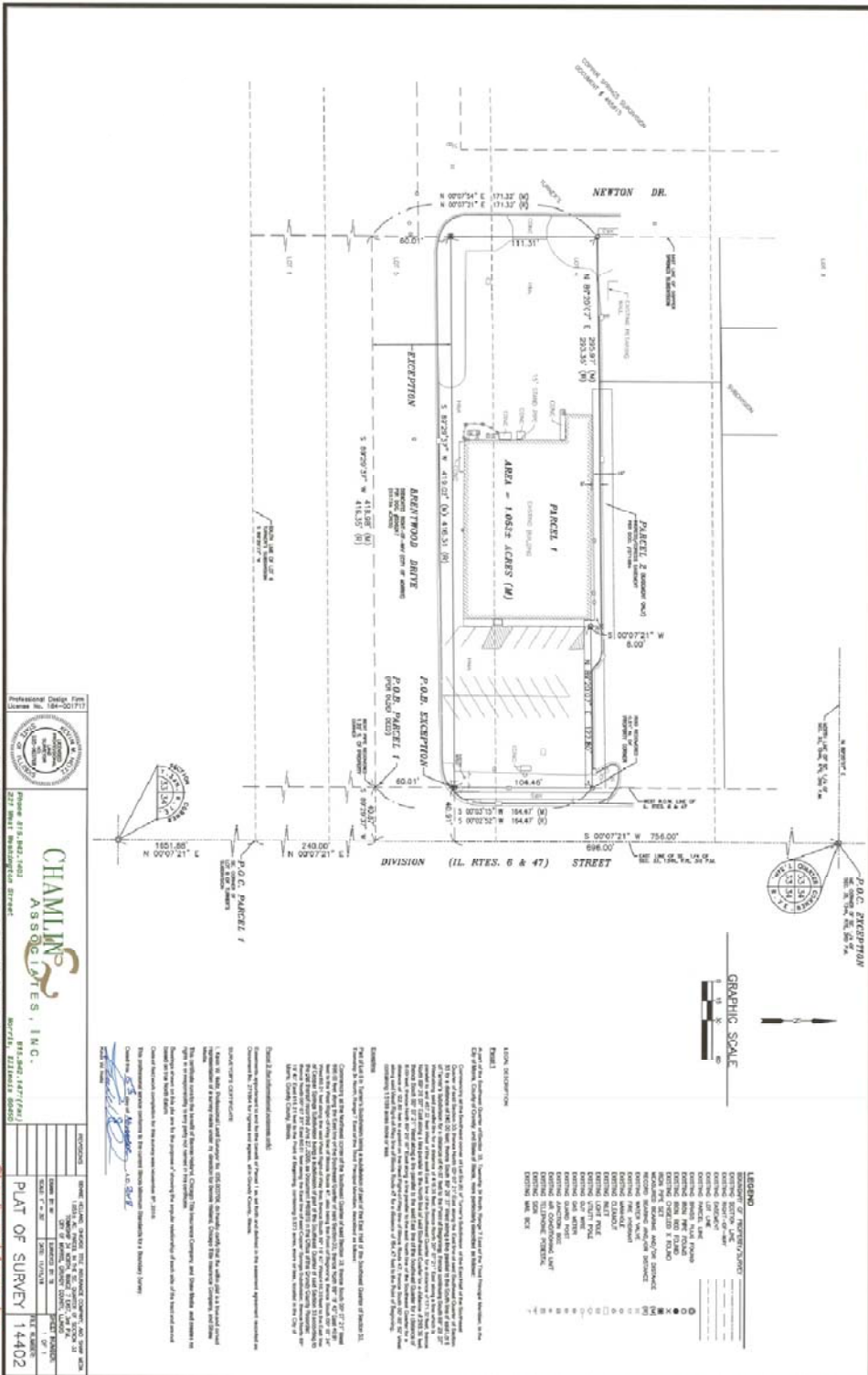
**Location:** 1804 N. Division St. Morris IL.

**Price:** \$749,000

**Comments:** One of the last remaining parcels available along the Rt. 47 corridor! 1 acre of prime commercial land with 3 streets surrounding parcel. Neighboring retailers include McDonalds, Jersey Mikes, Domino's, Walmart, Menards...



519 Franklin St. Suite 102  
Morris, IL 60450  
[www.MARQUETTEPROPERTIES.com](http://www.MARQUETTEPROPERTIES.com)



**CHAMLIN ASSOCIATES, INC.**  
 2077 PRINCE STREET  
 RALEIGH, NC 27603  
 (919) 876-4444

NO.	DESCRIPTION	DATE
1	REVISION	
2	REVISION	
3	REVISION	
4	REVISION	
5	REVISION	
6	REVISION	
7	REVISION	
8	REVISION	
9	REVISION	
10	REVISION	

PLAT OF SURVEY 14402  
 Chamlin and Assoc., Inc.

**LEGEND**

- SOLID LINE: BOUNDARY
- DASHED LINE: EXISTING BOUNDARY
- DOTTED LINE: EXISTING BOUNDARY
- SOLID LINE WITH DASHES: EXISTING BOUNDARY
- DOTTED LINE WITH DASHES: EXISTING BOUNDARY
- SOLID LINE WITH DOTTED DASHES: EXISTING BOUNDARY
- DOTTED LINE WITH DOTTED DASHES: EXISTING BOUNDARY
- SOLID LINE WITH SOLID DASHES: EXISTING BOUNDARY
- DOTTED LINE WITH SOLID DASHES: EXISTING BOUNDARY
- SOLID LINE WITH DOTTED SOLID DASHES: EXISTING BOUNDARY
- DOTTED LINE WITH DOTTED SOLID DASHES: EXISTING BOUNDARY
- SOLID LINE WITH SOLID SOLID DASHES: EXISTING BOUNDARY
- DOTTED LINE WITH SOLID SOLID DASHES: EXISTING BOUNDARY
- SOLID LINE WITH DOTTED DOTTED DASHES: EXISTING BOUNDARY
- DOTTED LINE WITH DOTTED DOTTED DASHES: EXISTING BOUNDARY
- SOLID LINE WITH SOLID DOTTED DASHES: EXISTING BOUNDARY
- DOTTED LINE WITH SOLID DOTTED DASHES: EXISTING BOUNDARY
- SOLID LINE WITH DOTTED SOLID DOTTED DASHES: EXISTING BOUNDARY
- DOTTED LINE WITH DOTTED SOLID DOTTED DASHES: EXISTING BOUNDARY
- SOLID LINE WITH SOLID SOLID DOTTED DASHES: EXISTING BOUNDARY
- DOTTED LINE WITH SOLID SOLID DOTTED DASHES: EXISTING BOUNDARY
- SOLID LINE WITH DOTTED DOTTED SOLID DASHES: EXISTING BOUNDARY
- DOTTED LINE WITH DOTTED DOTTED SOLID DASHES: EXISTING BOUNDARY
- SOLID LINE WITH SOLID DOTTED SOLID DASHES: EXISTING BOUNDARY
- DOTTED LINE WITH SOLID DOTTED SOLID DASHES: EXISTING BOUNDARY
- SOLID LINE WITH DOTTED SOLID SOLID DASHES: EXISTING BOUNDARY
- DOTTED LINE WITH DOTTED SOLID SOLID DASHES: EXISTING BOUNDARY
- SOLID LINE WITH SOLID SOLID SOLID DASHES: EXISTING BOUNDARY
- DOTTED LINE WITH SOLID SOLID SOLID DASHES: EXISTING BOUNDARY
- SOLID LINE WITH DOTTED SOLID SOLID DOTTED DASHES: EXISTING BOUNDARY
- DOTTED LINE WITH DOTTED SOLID SOLID DOTTED DASHES: EXISTING BOUNDARY
- SOLID LINE WITH SOLID SOLID SOLID DOTTED DASHES: EXISTING BOUNDARY
- DOTTED LINE WITH SOLID SOLID SOLID DOTTED DASHES: EXISTING BOUNDARY
- SOLID LINE WITH DOTTED SOLID SOLID SOLID DASHES: EXISTING BOUNDARY
- DOTTED LINE WITH DOTTED SOLID SOLID SOLID DASHES: EXISTING BOUNDARY