



# MARQUETTE PROPERTIES, INC.

**Peter Fleming**

Office: 815-941-0207

Cell: 773-882-6286

marquetteprop@sbcglobal.net

**Michael Fleming**

Office: 815-941-0207

Cell: 815-347-5151

mjfleming51@gmail.com

## FOR LEASE

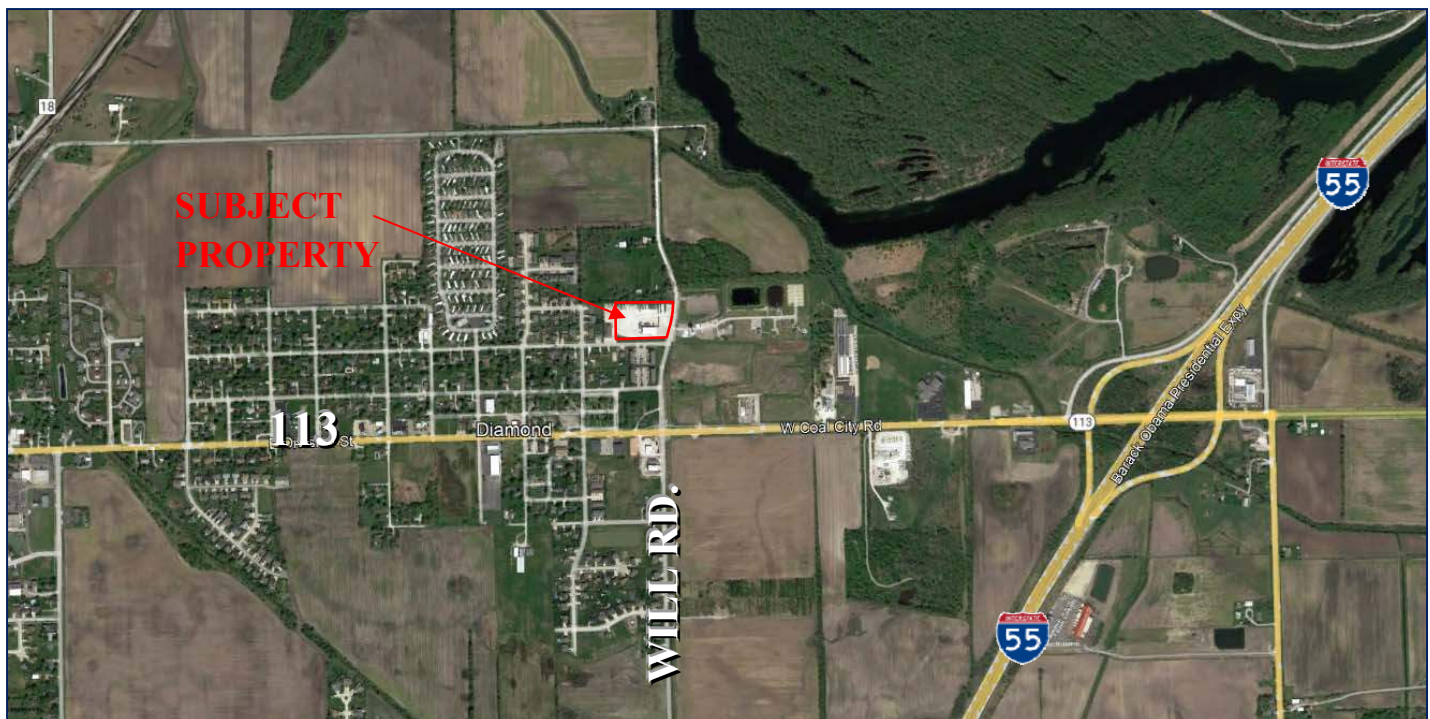
### Industrial Building w/ Truck Parking – Diamond, IL

**Size:** 60' x 120' w/ 2.25 +/- acre yard

**Location:** 195 S. Will Rd. Diamond, IL.

**Lease Price:** \$15,000 per month

**Comments:** Includes shop with 12'x30' office space,  
14 ft overhead drive doors and 2.25 +/- acre fenced in lit yard  
with cameras. Truck/Tank wash capability. Located near I-55.



7695 Ashley Rd.

Morris, IL 60450

[www.MARQUETTEPROPERTIES.com](http://www.MARQUETTEPROPERTIES.com)