



MARQUETTE PROPERTIES, INC.

Peter Fleming

Office: 815-941-0207

Cell: 773-882-6286

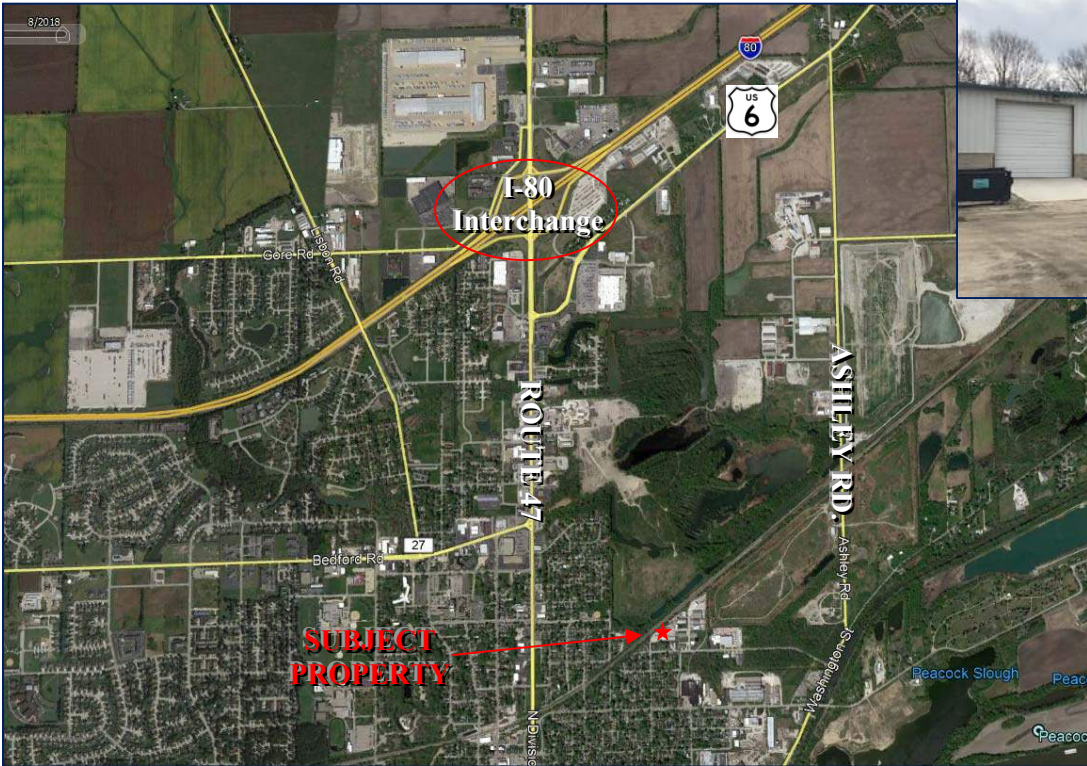
marquetteprop@sbcglobal.net

FOR SALE

Industrial Building – Morris, IL

- Size:** 15,000 +/- s/f
Location: 1302 Spruce St. Morris, IL 60450
Zoning: Industrial
Price: \$1,500,000

Comments: Great investment opportunity. 3- unit industrial building built in 2008. Steel frame construction with 800 amp, 3 phase electric & 4 - 12' overhead doors. One unit available.



7695 Ashley Rd
Morris, IL 60450
www.MARQUETTEPROPERTIES.com