



# MARQUETTE PROPERTIES, INC.

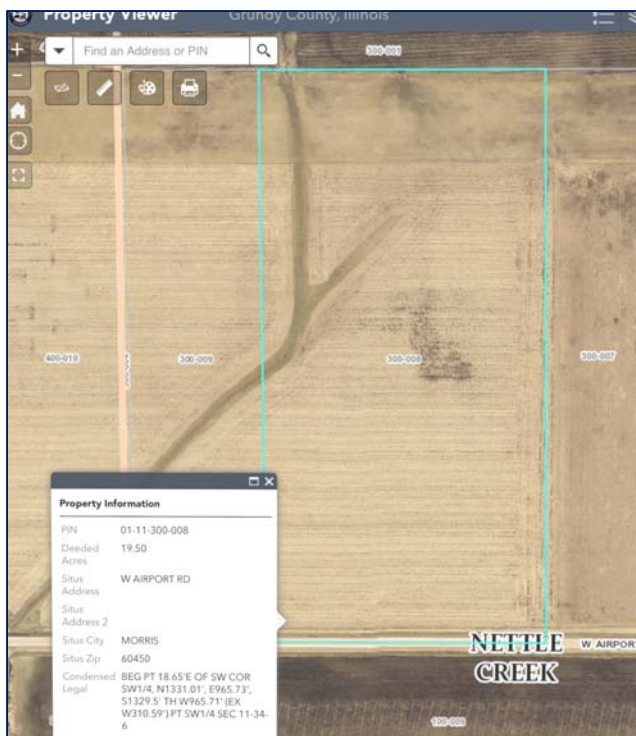
**Mark Hansen**  
Cell: 815-791-6344  
Email: [mark.marquetteprop@gmail.com](mailto:mark.marquetteprop@gmail.com)

## FOR SALE

### Buildable Lot – Morris, IL

**Acres:** 19.5 ac.  
**Location:** 5000 W Airport Rd. Morris IL. 60450  
**Price:** \$275,000  
**Taxes:** \$887.44 (2019)

**Comments:** Build your dream home and sheds on this large, flat, buildable 19.5 acres of class A soil zoned agricultural. Farm animals and horses are welcome. Comes complete with the 4,000 ft long airstrip at the north end of the property shared by four land owners. Plenty of room to spread out, fence in pastures, plant hayfields, tree farm or rent extra acres to a local farmer for planting crops.



519 Franklin St. Suite 102  
Morris, IL 60450  
[www.MARQUETTEPROPERTIES.com](http://www.MARQUETTEPROPERTIES.com)