



# MARQUETTE PROPERTIES, INC.

Mark Hansen

Cell: 815-791-6344

Email: [mark.marquetteprop@gmail.com](mailto:mark.marquetteprop@gmail.com)

## FOR SALE

### Development/Farmland – Morris, IL

**Acres:** 160 +/- ac.

**Location:** 8835 Ashley Rd., Morris, IL

**Price:** \$18,000/ ac.

**Taxes:** \$8,156 (2018)

**Comments:** 160 ac. North of Morris. Nice square flat parcel, touching Morris city limits, half way between two Rt. 80 interchanges. Class A soils with 155 acres tillable.

**Prime investment property in the path of development.**



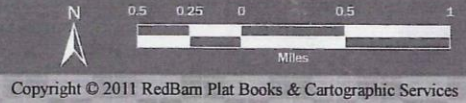
519 Franklin St. Suite 102

Morris, IL 60450

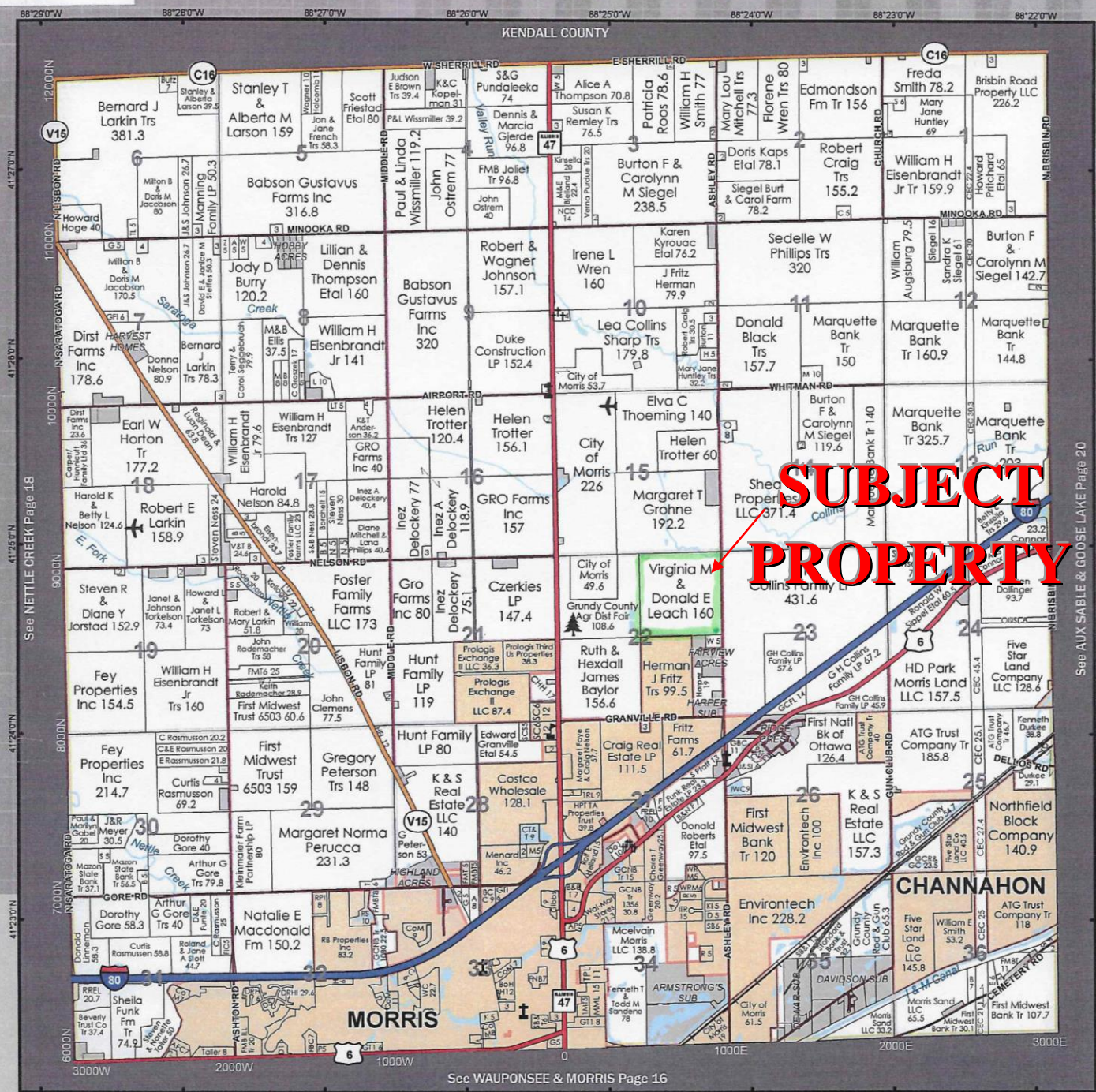
[www.MARQUETTEPROPERTIES.com](http://www.MARQUETTEPROPERTIES.com)

# SARATOGA

T.34N.-R.7E.



Copyright © 2011 RedBarn Plat Books & Cartographic Services



**SUBJECT PROPERTY**

We are a full-service real estate company with over a decade of experience on the I-80 and I-55 corridors.



Land Sales • Industrial & Commercial Sales and Leasing  
**Marquette Properties, Inc.**

PETER FLEMING • MICHAEL FLEMING

519 Franklin Street, Suite 102  
Morris, IL 60450

**815-941-0207**

[www.marquetteproperties.com](http://www.marquetteproperties.com)