



MARQUETTE PROPERTIES, INC.

Mark Hansen
Cell: 815-791-6344
Email: mark.marquetteprop@gmail.com

FOR SALE

Land – Dwight, IL

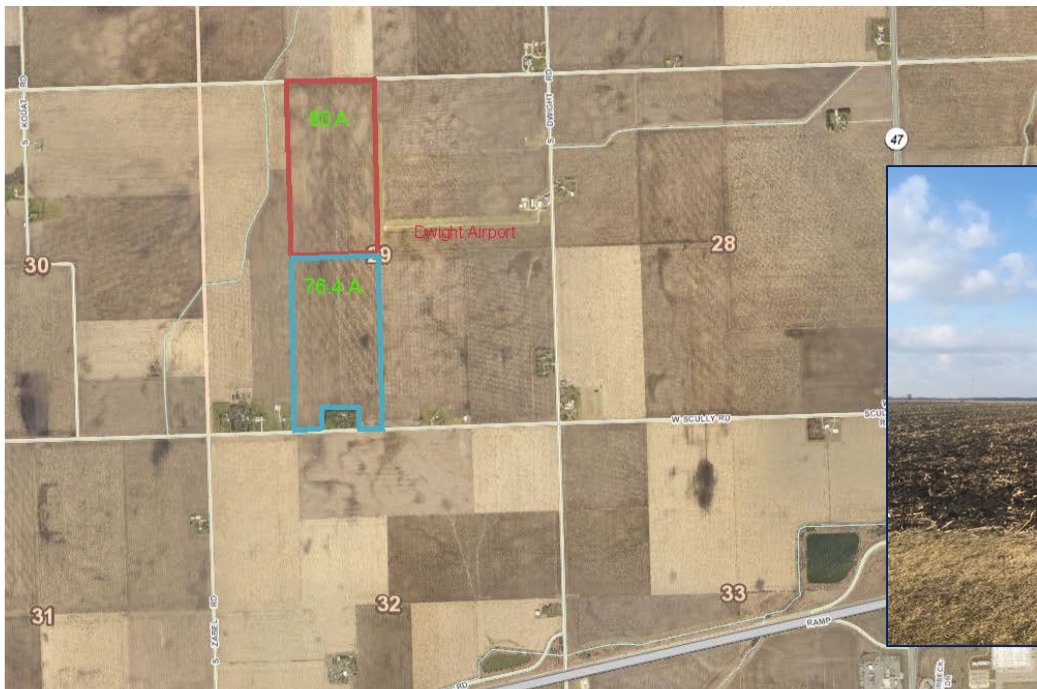
Acres: 76.4 acres

Location: 1600 W. Scully Rd Dwight, IL 60420

Price: \$9,950 per ac

Comments: Highly productive all tillable 76.4 acres of farm ground. With very reasonable Grundy county taxes. Has at least two additional residential building allocations and is close to town and interstate access. The 3.6 acre house and buildings can be purchased in addition to the tillable. 80 acres to the North also listed.

Dwight Farm Ground



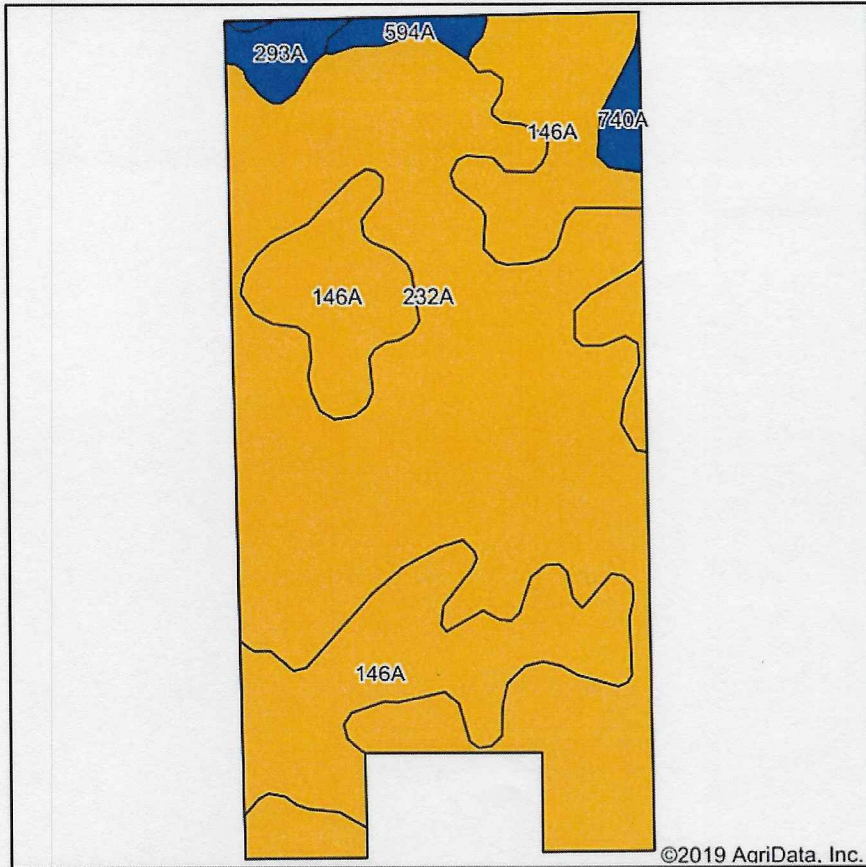
Source: Grundy County web mapping application Date: 2/25/2019

0 0.15 0.3 0.45 0.6 mi



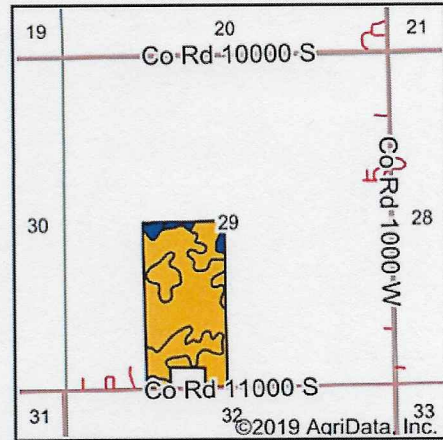
519 Franklin St. Suite 102
Morris, IL 60450
www.MARQUETTEPROPERTIES.com

Soils Map



Soils data provided by USDA and NRCS.

©2019 AgriData, Inc.



State: Illinois
 County: Grundy
 Location: 29-31N-7E
 Township: Goodfarm
 Acres: 74.06
 Date: 2/22/2019

Maps Provided By:



Area Symbol: IL063, Soil Area Version: 13

Code	Soil Description	Acres	Percent of field	Il. State Productivity Index Legend	Subsoil rooting a	Corn Bu/A	Soybeans Bu/A	Wheat Bu/A	Oats Bu/A	Sorghum c Bu/A	Alfalfa d hay, T/A	Grass-legume e hay, T/A	Crop productivity index for optimum management
232A	Ashkum silty clay loam, 0 to 2 percent slopes	46.89	63.3%		FAV	170	56	65	85	0	0.00	5.14	127
146A	Elliott silt loam, 0 to 2 percent slopes	23.90	32.3%		FAV	168	55	68	87	0	0.00	5.02	125
293A	Andres silt loam, 0 to 2 percent slopes	1.41	1.9%		FAV	184	59	71	97	0	0.00	5.39	135
594A	Reddick clay loam, 0 to 2 percent slopes	0.99	1.3%		FAV	177	56	66	89	0	0.00	5.14	130
740A	Darroch silt loam, 0 to 2 percent slopes	0.87	1.2%		FAV	177	57	70	92	0	0.00	5.14	129
Weighted Average						169.8	55.7	66.2	86	*-	0.00	5.11	126.6

Table: Optimum Crop Productivity Ratings for Illinois Soil by K.R. Olson and J.M. Lang, Office of Research, ACES, University of Illinois at Champaign-Urbana. Version: 1/2/2012 Amended Table S2 B811

Crop yields and productivity indices for optimum management (B811) are maintained at the following NRES web site: <http://soilproductivity.nres.illinois.edu/>

** Indexes adjusted for slope and erosion according to Bulletin 811 Table S3

a UNF = unfavorable; FAV = favorable

b Soils in the southern region were not rated for oats and are shown with a zero "0".

c Soils in the northern region or in both regions were not rated for grain sorghum and are shown with a zero "0".

d Soils in the poorly drained group were not rated for alfalfa and are shown with a zero "0".

e Soils in the well drained group were not rated for grass-legume and are shown with a zero "0".

Soils data provided by USDA and NRCS. Soils data provided by University of Illinois at Champaign-Urbana.

*c: Using Capabilities Class Dominant Condition Aggregation Method