



# MARQUETTE PROPERTIES, INC.

**Mark Hansen**

**Cell: 815-791-6344**

**Email: [mark.marquetteprop@gmail.com](mailto:mark.marquetteprop@gmail.com)**

## FOR SALE

### 78.5 ac Farmland – LaSalle Cty, IL

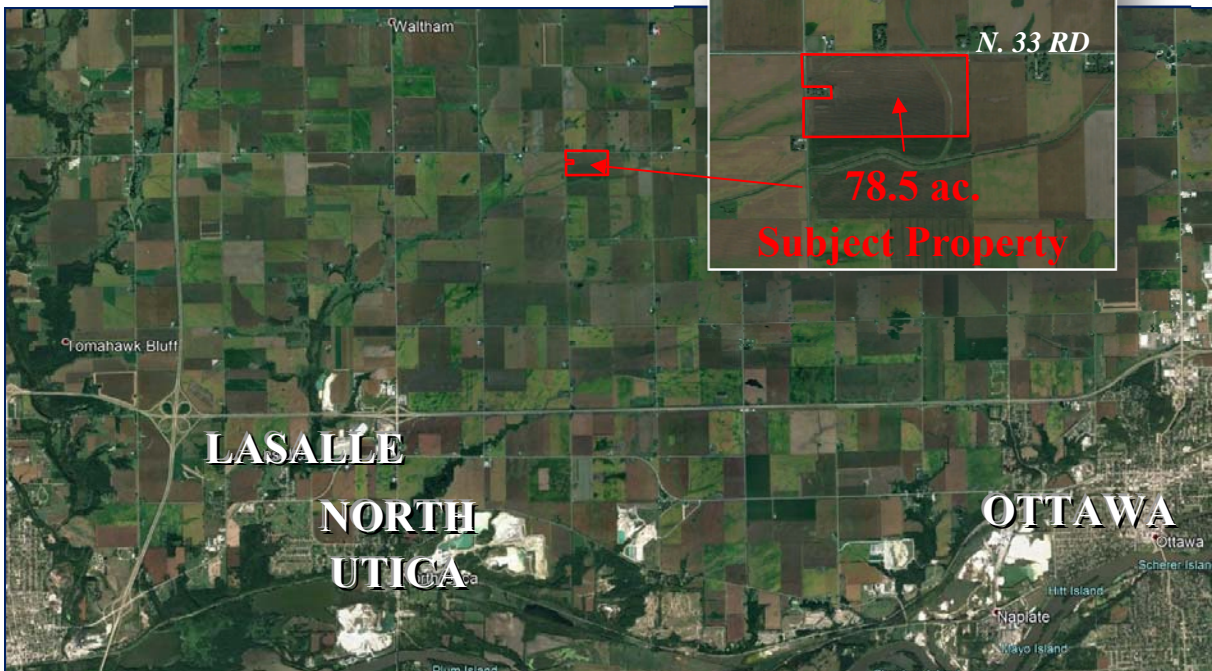
**Acres:** 78.5 +/- acres w/ 74 tillable

**Location:** North Utica, IL - Sec 23 Waltham Twp, LaSalle Cty.  
SE Corner of N. 33Rd & E. 10th Rd.

**Price** \$10,300 per surveyed ac.

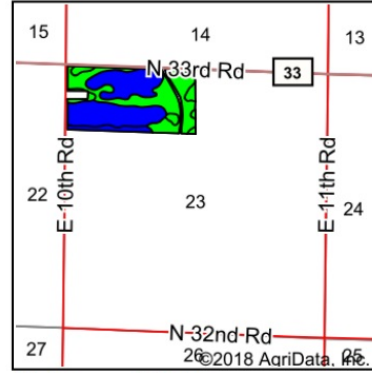
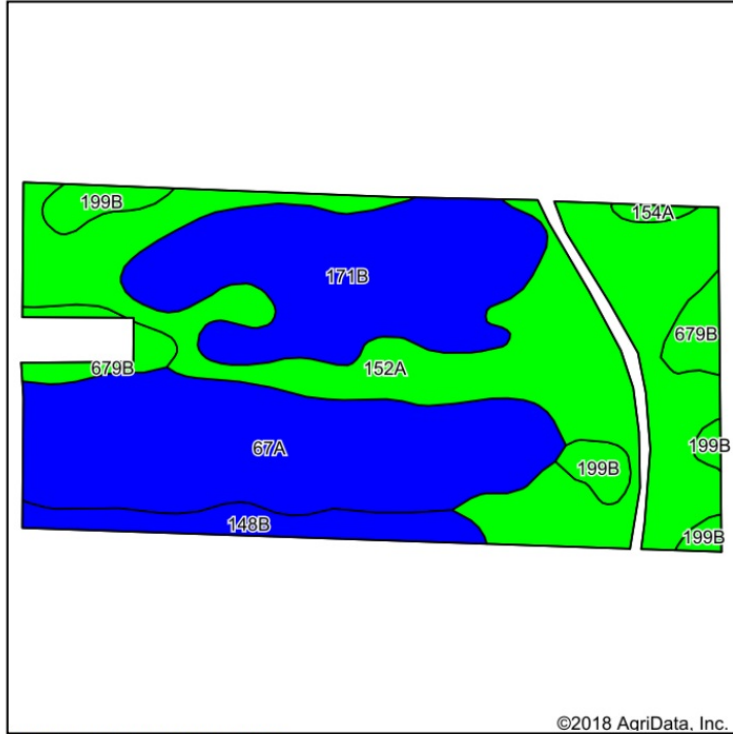
**Taxes:** \$3,452.68 (2017)

**Comments:** Class A Soil, 139 PI, Drummer, Harpster, Catlin soils.



519 Franklin St. Suite 102  
Morris, IL 60450  
[www.MARQUETTEPROPERTIES.com](http://www.MARQUETTEPROPERTIES.com)

# Soils Map



State: **Illinois**  
 County: **La Salle**  
 Location: **23-34N-2E**  
 Township: **Waltham**  
 Acres: **72.08**  
 Date: **10/25/2018**



Soils data provided by USDA and NRCS.

Area Symbol: IL099, Soil Area Version: 14

Code	Soil Description	Acres	Percent of field	Ill. State Productivity Index Legend	Subsoil rooting <sup>a</sup>	Corn Bu/A	Soybeans Bu/A	Wheat Bu/A	Oats Bu/A <sup>b</sup>	Sorghum <sup>c</sup> Bu/A	Alfalfa <sup>d</sup> hay, T/A	Grass-legume <sup>e</sup> hay, T/A	Crop productivity index for optimum management
152A	Drummer silty clay loam, 0 to 2 percent slopes	27.52	38.2%		FAV	195	63	73	100	0	0.00	5.64	144
67A	Harpster silty clay loam, 0 to 2 percent slopes	19.31	26.8%		FAV	182	57	68	89	0	0.00	5.39	133
**171B	Catlin silt loam, 2 to 5 percent slopes	15.79	21.9%		FAV	**185	**58	**72	**98	0	**6.70	0.00	**137
**148B	Proctor silt loam, 2 to 5 percent slopes	3.63	5.0%		FAV	**183	**57	**69	**98	0	**6.34	0.00	**134
**199B	Plano silt loam, 2 to 5 percent slopes	2.81	3.9%		FAV	**192	**59	**73	**102	0	**6.95	0.00	**141
**679B	Blackberry silt loam, 2 to 5 percent slopes	2.66	3.7%		FAV	**192	**59	**73	**102	0	**6.96	0.00	**141
154A	Flanagan silt loam, 0 to 2 percent slopes	0.36	0.5%		FAV	194	63	77	102	0	0.00	5.90	144
<b>Weighted Average</b>						<b>188.5</b>	<b>59.7</b>	<b>71.3</b>	<b>96.7</b>	<b>*</b>	<b>2.31</b>	<b>3.63</b>	<b>138.8</b>

**Table: Optimum Crop Productivity Ratings for Illinois Soil by K.R. Olson and J.M. Lang, Office of Research, ACES, University of Illinois at Champaign-Urbana.** Version: 1/2/2012 Amended Table S2 B811

Crop yields and productivity indices for optimum management (B811) are maintained at the following NRES web site: <http://soilproductivity.nres.illinois.edu/>

\*\* Indexes adjusted for slope and erosion according to Bulletin 811 Table S3

<sup>a</sup> UNF = unfavorable; FAV = favorable

<sup>b</sup> Soils in the southern region were not rated for oats and are shown with a zero "0".

<sup>c</sup> Soils in the northern region or in both regions were not rated for grain sorghum and are shown with a zero "0".

<sup>d</sup> Soils in the poorly drained group were not rated for alfalfa and are shown with a zero "0".

<sup>e</sup> Soils in the well drained group were not rated for grass-legume and are shown with a zero "0".

\*c: Using Capabilities Class Dominant Condition Aggregation Method

Soils data provided by USDA and NRCS. Soils data provided by University of Illinois at Champaign-Urbana.