



MARQUETTE PROPERTIES, INC.

Peter Fleming

Office: 815-941-0207

Cell: 773-882-6286

marquetteprop@sbcglobal.net

Michael Fleming

Office: 815-941-0207

Cell: 815-347-5151

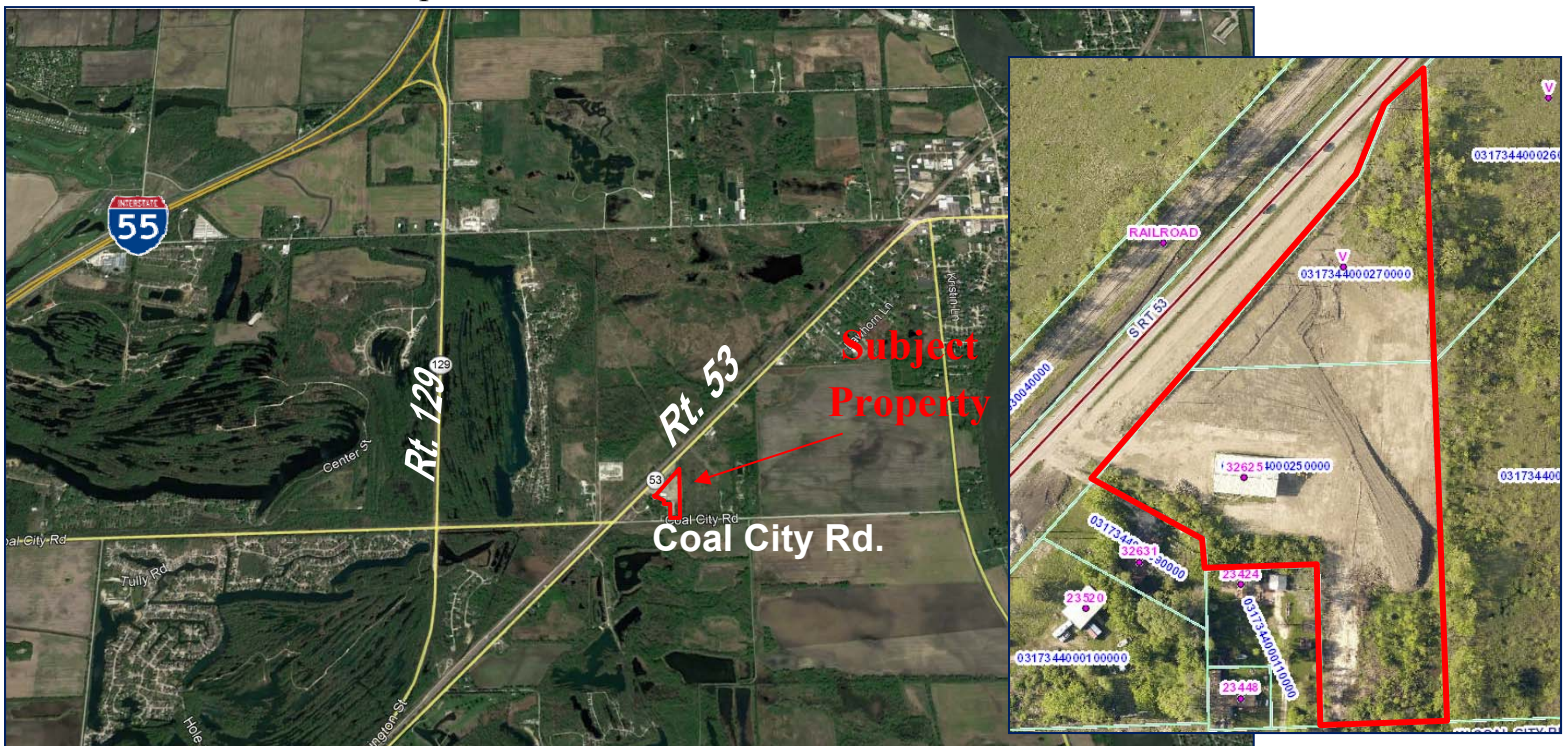
mjfleming51@gmail.com

FOR SALE

Industrial Lot – Wilmington, IL

- Acres:** 6.7 acres
- Location:** 32625 S. Rt 53 Wilmington, IL.
- Zoning:** I-2 - City of Wilmington - Industrial Zoning
- Reduced Price:** \$599,000
- Taxes:** \$4,395.04 (2016)

Comments: 6.7 industrial acres with building structure & hard pack parking lot. 60'x100' pole building has concrete floor & 3 phase electric. Entrance off of Rt. 53 and Coal City Rd. 6' chain link fence on 3 sides, with privacy berm at front. Approved drainage system. Close proximity to intermodal yards & I-55. Site will need new well & Septic



519 Franklin St. Suite 102
Morris, IL 60450
www.MARQUETTEPROPERTIES.com