



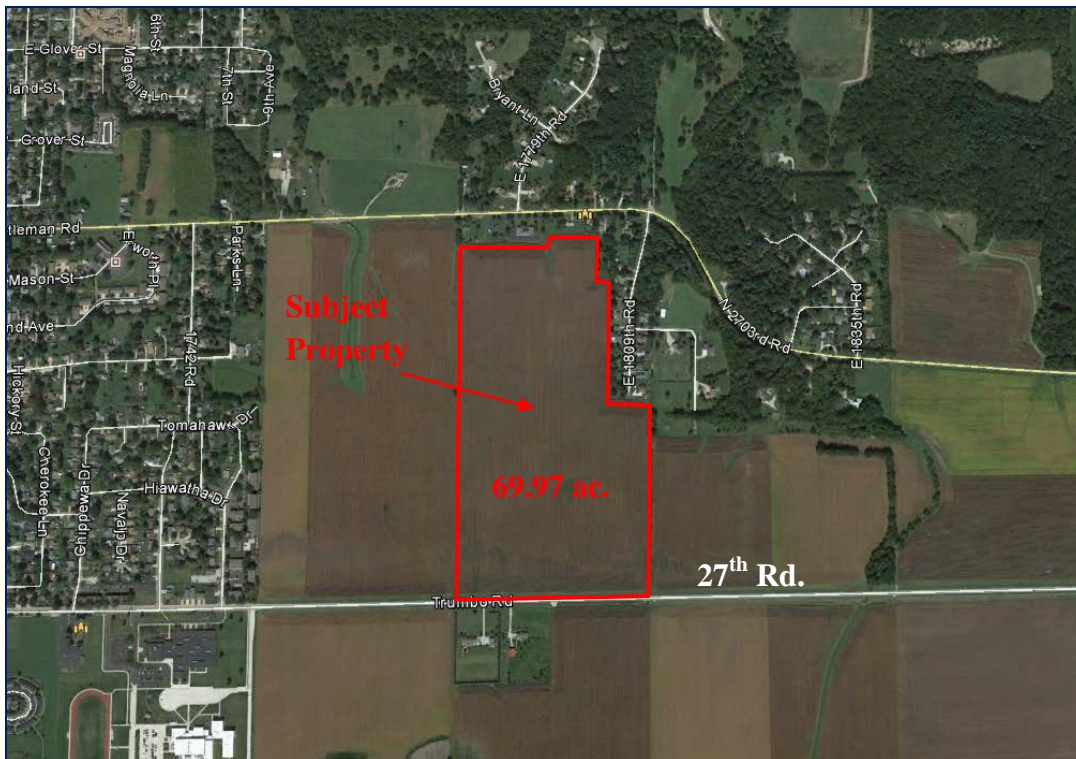
MARQUETTE PROPERTIES, INC.

Mark Hansen
Cell: 815-791-6344
Email: mark.marquetteprop@gmail.com

FOR SALE

Farmland – South Ottawa, IL

- Acres:** 69.97 ac.
- Location:** North 27th Rd., South Ottawa
- Comments:** Nice piece of land, excellent productivity index, future development, public utilities nearby. New school nearby across the rd.
- Price:** \$825,646.00 total (\$11,800/ ac.)
- Taxes:** \$2,094.82 (2015)



519 Franklin St. Suite 102
Morris, IL 60450

www.MARQUETTEPROPERTIES.com

South Ottawa Township · 69.97± ac · LaSalle County, Illinois



The acreage figures below are estimates

152	Drummer silty clay loam	31.07	195	63	144
149	Brenton silt loam	1.4	195	60	141
663	Clare silt loam	20.1	182	57	134
67	Harpster silty clay loam	11.1	182	57	133
219	Millbrook silt loam	2.9	177	55	129
134	Camden silt loam	2.3	166	51	119
668	Somonauk silt loam	.8	163	49	117
549	Marseilles silt loam	.3	144	47	107
Total acres		69.97	Average PI		137

source: USDA/NRCS Soil Survey of LaSalle County and University of Illinois Bulletin 811 Optimum Crop Productivity Ratings for Illinois soils

519 Franklin St. Suite 102
 Morris, IL 60450
www.MARQUETTEPROPERTIES.com