



# MARQUETTE PROPERTIES, INC.

**Peter Fleming**  
Office: 815-941-0207  
Cell: 773-882-6286  
Email: pfleming52@yahoo.com

**Michael Fleming**  
Office: 815-941-0207  
Cell: 815-347-5151  
Email: tuaminc@yahoo.com

## FOR SALE

### Commercial / Retail Lots - Minooka, IL

- Location:** SW Suburban Chicago (1<sup>st</sup> exit west of I-55)  
Directly south of the I-80 interchange on Ridge Rd.
- Zoning:** B-2 Commercial
- Ideal For:** Hotel / Restaurant / Bar & Grill, or other retail uses
- Price:**
  - Lot 2 & 3: \$1,250,000 (2.5 acres)
  - Lot 5: \$875,000 (1.2 +/- acres)
  - Lot 9: \$550,000 (1.06 acres)
- Comments:** Within walking distance from the new Hampton Inn & Suites



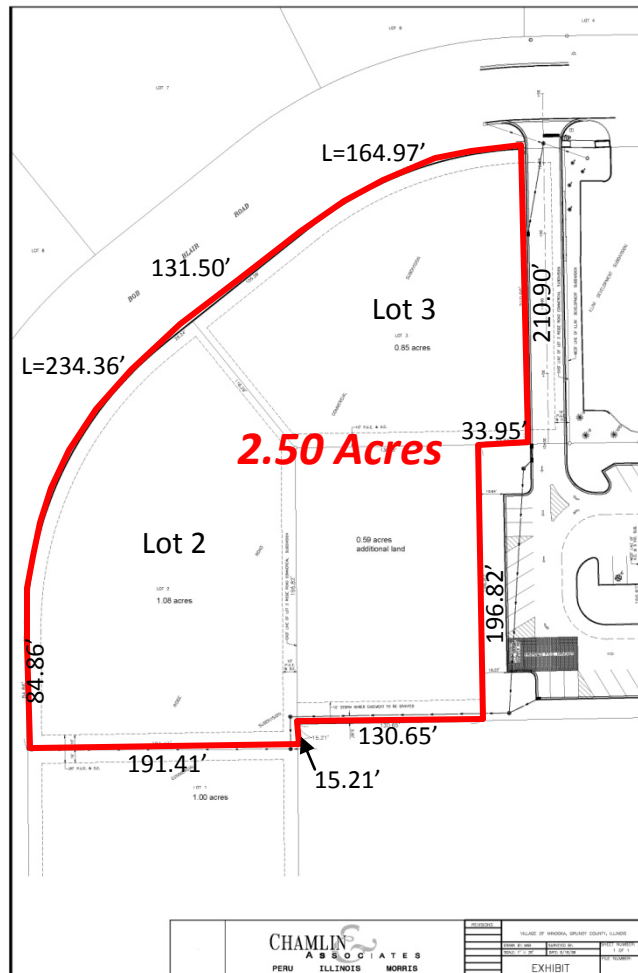
*Partially Broker Owned*

519 Franklin St. Suite 102  
Morris, IL 60450  
[www.MARQUETTEPROPERTIES.com](http://www.MARQUETTEPROPERTIES.com)

# FINAL PLAT FOR RIDGE ROAD COMMERCIAL SUBDIVISION

PART OF THE NORTHEAST QUARTER SECTION 2  
TOWNSHIP 34 NORTH, RANGE 8 EAST OF THE  
THIRD PRINCIPAL MERIDIAN  
VILLAGE OF MINOOKA, ILLINOIS  
19.55± ACRE  
JULY, 2004

- LEGEND**
- BOUNDARY OF SUBDIVISION
  - SECTION LINE
  - RIGHT OF WAY LINE
  - ORANGE AND PUBLIC UTILITY EASEMENT OR EASEMENT AS NOTED
  - EMERGENCY OVERLAND RELEASE ROUTE
  - IRON PIPE RECOVERED
  - BRASS MONUMENT RECOVERED
  - IRON PIPE SET





JOLIET ↑

SHOREWOOD

WIDLY RD.

Summerfield  
Subdivision

Kendall  
Energy  
Power Plant

RIDGE RD.



HOLT RD.

Electrolux

MID POINT RD.

macy's

DISTRIBUTION CENTER



GRAINGER



Hotel Lot



MINOOKA RD.



MINOOKA

Minooka  
Jr. High

Minooka  
High School

RIDGE RD.

CHANNAHON